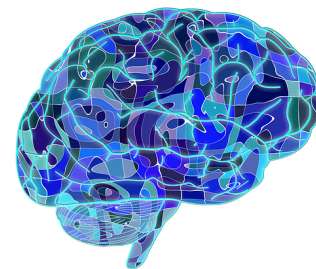


# Consciousness and Cognition

## PHIL/PSY 241 | Spring 2023



### Course Info

**Instructor:** Matt DeStefano ([destefano@email.arizona.edu](mailto:destefano@email.arizona.edu))

**Office Hours:** Available via Zoom by appointment.

**E-mail Policy:** E-mail is the absolute best way to contact me (this is especially true given that it is an online course). I aim to respond to all e-mails within a 24-hour period, not including weekends.

**Introduction:** In this course, we will look at consciousness and cognition from a philosophical perspective. We'll begin with a survey of some historical positions about the nature and existence of consciousness, and then move into questions about the nature of consciousness and cognition that occupy current research.

**Text:** Andy Clark's **Mindware**, 2nd edition. ISBN: 978-0-19-982815-9. This book will be available online through the University's VitalSource Inclusive Access program, details of which can be found here: <https://shop.arizona.edu/textbooks/Inclusive.asp>



**Absence and Class Participation Policy:** The UA's policy concerning Class Attendance, Participation, and Administrative Drops is available at: <http://catalog.arizona.edu/policy/class-attendance-participation-and-administrative-drop>

The UA policy regarding absences for any sincerely held religious belief, observance or practice will be accommodated where reasonable, <http://policy.arizona.edu/human-resources/religious-accommodation-policy>.

Absences pre-approved by the UA Dean of Students (or Dean Designee) will be honored. See: <https://deanofstudents.arizona.edu/absences>

**Accessibility and Accommodations:** At the University of Arizona, we strive to make learning experiences as accessible as possible. If you anticipate or experience barriers based on disability or pregnancy, please contact the Disability Resource Center (520-621-3268, <https://drc.arizona.edu/>) to establish reasonable accommodations.

**Code of Academic Integrity:** Students are encouraged to share intellectual views and discuss freely the principles and applications of course materials. However, graded work/exercises must be the product of independent effort unless otherwise instructed. Students are expected to adhere to the UA Code of Academic Integrity as described in the UA General Catalog. See: <http://deanofstudents.arizona.edu/academic-integrity/students/academic-integrity>.

**Drop/Add/Attendance:** The UA's policy concerning Class Attendance, Participation, and Administrative Drops is available at <http://catalog.arizona.edu/policy/class-attendance-participation-and-administrative-drop>

**Discrimination/Harassment:** The University is committed to creating and maintaining an environment free of discrimination; see <http://policy.arizona.edu/human-resources/nondiscrimination-and-anti-harassment-policy>

**Threatening Behavior:** The UA Threatening Behavior by Students Policy prohibits threats of physical harm to any member of the University community, including to oneself. See <http://policy.arizona.edu/education-and-student-affairs/threatening-behavior-students>.

**Plagiarism/Cheating:** Students are encouraged to share intellectual views and discuss freely the principles and applications of course materials. However, graded work/exercises must be the product of independent effort unless otherwise instructed. Students are expected to adhere to the UA Code of Academic Integrity as described in the UA General Catalog. See <http://deanofstudents.arizona.edu/academic-integrity/students/academic-integrity>.

**Non-discrimination and Anti-harassment policy:** The University of Arizona is committed to creating and maintaining an environment free of discrimination. In support of this commitment, the University prohibits discrimination, including harassment and retaliation, based on a protected classification, including race, color, religion, sex, national origin, age, disability, veteran status, sexual orientation, gender identity, or genetic information. For more information, including how to report a concern, please see <http://policy.arizona.edu/human-resources/nondiscrimination-and-anti-harassment-policy>

### **Writing Requirement**

All Tier One and Tier Two General Education Courses are writing intensive (<http://gened.arizona.edu/proposal-guidelines/writing-requirement>). This requirement will be fulfilled through the Discussion Board Post & Replies, as well as the term paper which you will be able to re-write and re-submit as a result of written feedback you receive.

### **Subject to Change Statement:**

Information contained in the course syllabus, other than the grade and absence policy, may be subject to change with advance notice, as deemed appropriate by the instructor.

**Grading Breakdown:** Your final grade consists of three components, each comprising 1/3 of your overall grade:

**Quizzes:** Each week there will be a multiple choice (& true/false) quiz based primarily on the readings.

**Discussion Board Posts & Replies:** You will respond to a prompt based on the readings/lecture, and post a comment replying to your peer. More information and sample posts can be found on the Discussion Board.

**Term Paper:** You will write a paper of a length to be determined about one of the topics in this course. I will make prompts available, but you may also choose to write on a topic you select.

### **Course Schedule:**

1. Introduction: Meat Machines? (January 11 - January 15th)

#### *Readings:*

Meat Machines: Mind as Software (MW)

Some Backdrop (MW, Appendix I)

2. Symbol Systems and Neural Networks (January 16th - January 20th)

#### *Readings:*

Symbol Systems (MW)

Connectionism (MW)

3. Consciousness: Physical or Something Else? (January 23rd - Feb 3rd)

#### *Readings:*

“What is it like to be a bat?” (Thomas Nagel, D2L)

“What is it like to be...?” (Susan Blackmore, D2L)

“Could Love Be Like a Heatwave?...” (Janet Levin, D2L)

4. Folk Psychology and its Discontents (Feb 6th - February 12th)

#### *Readings:*

Patterns and Causes (MW)

“Functionalism at Forty” (Paul Churchland, D2L)

**Video:** Patricia Churchland explains what eliminative materialism is

5: Perception & Action (Feb 13th - Feb 24th)

#### *Readings:*

Perception, Action, and the Brain (MW)

“What Is Action-Oriented Perception?” (Zoe Drayson, D2L)

“Perception and Action: Alternative Views” (Susan Hurley, D2L)

6: The Extended Mind (Feb 27th – Mar 4th)

#### *Readings:*

The Extended Mind (MW)

“Extended cognition and the metaphysics of mind” (Zoe Drayson, D2L)



**Paper Due March 1st by 11:59 PM**